



WHORLTON BRIDGE - REFURBISHMENT WORKS

SEPTEMBER 2024

Over the past few weeks our specialist team working on the Whorlton Suspension Bridge refurbishment has made progress with the cable crane installation.

The cable crane has taken several weeks to install, with our specialist team undertaking ground works, anchor drilling, steel erection, and rigging, to fully construct the complex structure, which was designed specifically for this bridge.

The cable crane is two pivoted towers which stand on the north and south sides of the bridge, which are back stayed with grouted anchors and a proprietary waler transfer beam. The tower on the south side stands at 12.5m, with the north being 8m tall. There are five suspended catenary cables spanning approximately 95m between these two towers.

The central cable carries materials and bridge deck components during the dismantling and construction process. The two inner cables are aligned vertically to the bridge suspension chains and are used to lift, remove and re-install them. The two outer cables carry an under-deck platform which is operated by four remote control electric winches. These winches are connected at the towers and pass through a series of reeve blocks to the platform to pull it transversely across the river. The height of this platform can be adjusted manually using four tirlors which are attached directly to the platform from the cables above.

The cable crane is currently being commissioned and will be in use once fully signed off.



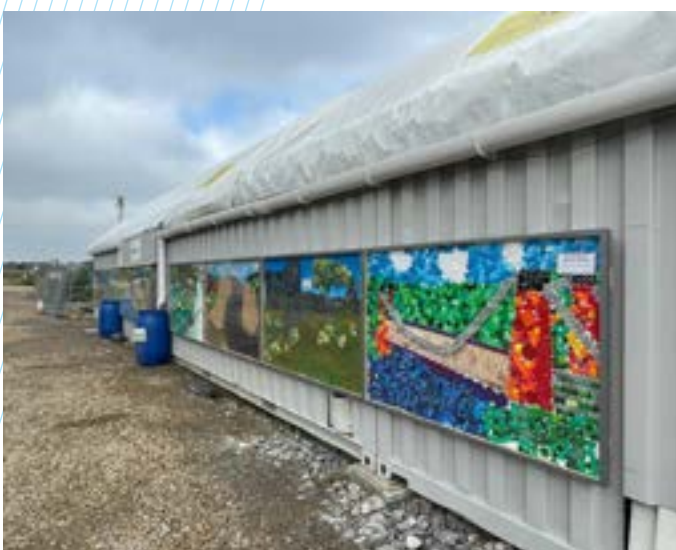
SITE VISITS:

Last month the team welcomed students from the Technical University of Dresden for a site visit, and at the end of September, representatives from the Institute of Structural Engineers will tour the works. The study group visit will feature presentations from Historic England, Ian Weir - conservation engineer on the project and VolkerLaser.

The Institution of StructuralEngineers

MONTALBO PRIMARY SCHOOL ARTWORK

In the last issue of the newsletter, we shared some of the fantastic artwork created by the students of Montalbo Primary School. We're delighted to share the artwork has now been safely installed on the side of our workshop.



To keep up to date with the project progress, please visit: [Whorlton Bridge](#)
For any enquiries, please email: enquiries@volkerlaser.co.uk